

at Constant 2018 Prices

GRDE GROWTH RATE 2023-2024



CONTRIBUTORS TO GROWTH

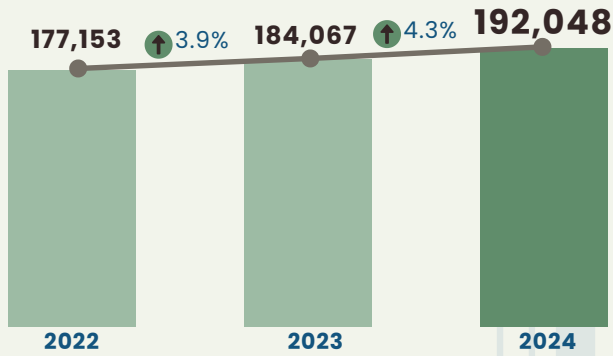
in percentage points

- 4.3** Household final consumption expenditure
- 1.3** Net Exports to the Rest of the World
- 0.5** Government final consumption expenditure
- 0.1** Net Exports to the Rest of the Philippines
- 0.5** Gross Capital Formation

PER CAPITA GRDP/GRDE

2022-2024

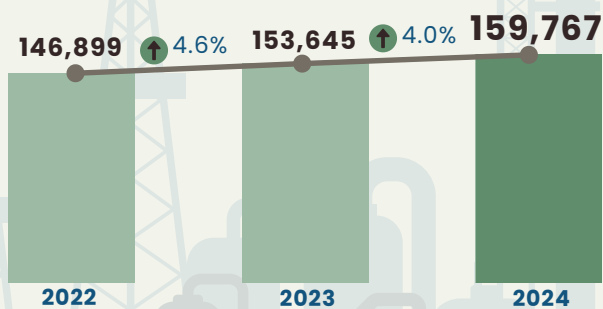
in pesos



PER CAPITA HOUSEHOLD FINAL CONSUMPTION EXPENDITURE

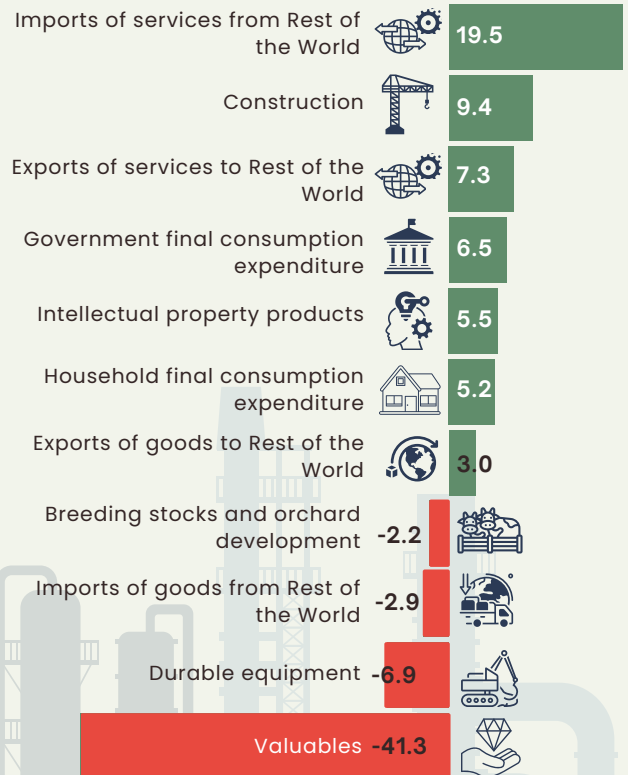
2023-2024

in pesos



GROWTH RATES BY EXPENDITURE ITEMS

in percent, 2023-2024



SHARE OF EXPENDITURE ITEMS TO THE REGIONAL ECONOMY

in percent

83.2 Household final consumption expenditure

19.9 Gross capital formation

7.2 Government final consumption expenditure

(16.0) Net Exports to the Rest of the World

5.7 Net Exports to the Rest of the Philippines