

# RSSO IV-A Financial Performance Report: Allotment, Obligations, Disbursements, and Budget Utilization Rate as of April 2025

Ref No. 2025-0400-IN27

## BUDGET

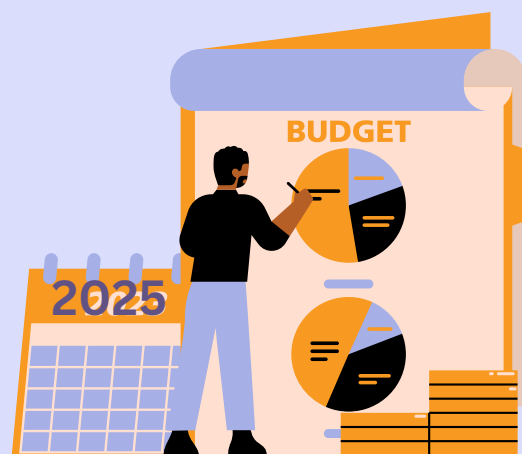
The financial plan of a government for a given period, usually for a fiscal year, which shows what its resources are, and how they will be generated and used over the fiscal period. The government budget also refers to the income, expenditures and sources of borrowings of the National Government that are used to achieve national objectives, strategies and programs.

Source: <https://www.dbm.gov.ph/wp-content/uploads/BESF/BESF2023/GLOSSARY.pdf>

## Budget Utilization Rate (BUR)\*

# 46.95%

\*Obligation vs. Allotment



## For CALABARZON:

P/A/P	ALLOTMENT	OBLIGATIONS	DISBURSEMENTS
-------	-----------	-------------	---------------

Personnel Services (PS)	118,228,900.23	37,551,905.89	37,551,905.89
Maintenance & Other Operating Expenses (MOOE)	260,990,705.83	140,823,013.02	127,013,406.78
Capital Outlay (CO)	737,625.00	-	-