

PROJECTED WASTE GENERATION

9,725 TONS PER DAY

from 10,125 recorded in 2022



NUMBER OF SOLID WASTE DISPOSAL FACILITIES




4 ↑↑↑
ILLEGAL DUMPSITES
from no recorded in 2022



43 ↑↑↑
SANITARY LANDFILLS
from 41 recorded in 2022



527 ↑↑↑
MATERIALS RECOVERY FACILITIES (MRFs)
same as recorded in 2022



46 ↑↑↑
from 44 recorded in 2022
REGISTERED TREATMENT, STORAGE, AND DISPOSAL (TSD) FACILITIES

CAPACITY OF HAZARDOUS WASTE TREATMENT AND DISPOSAL FACILITIES

464.52
thousand metric tons per day

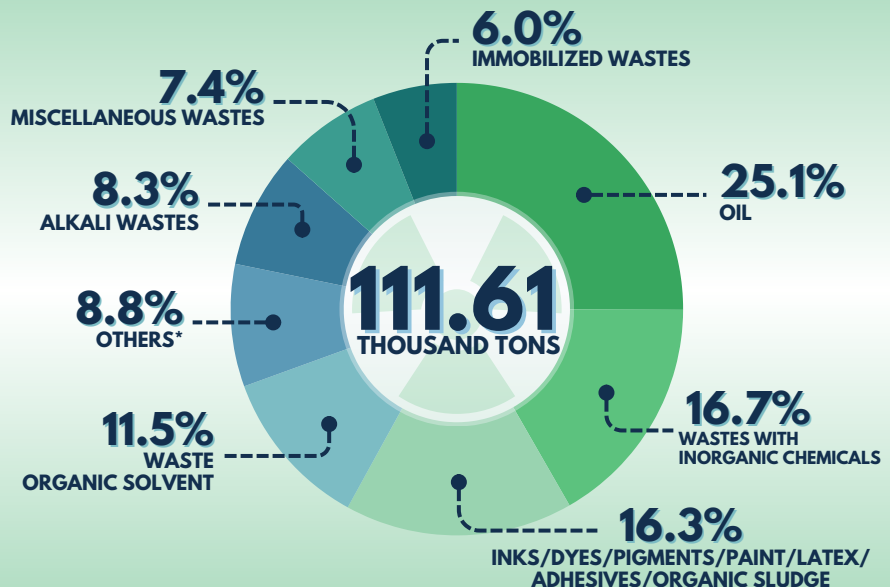


AMOUNT OF TREATED HAZARDOUS WASTE

103.28
thousand tons



GENERATED HAZARDOUS WASTE



*Includes Containers, Acid Wastes, Putrescible Organic, Wastes with Cyanides, Reactive Chemical Wastes, and Organic Chemicals